

PANEL MAX

INSTRUCTIONS

Version 2.0

Safety First



Disconnect tool from power source before making any adjustments.



Always wear proper ear protection when working with machinery.



Use caution when handling sharp objects (saw blades, router bits, drill bits and so on). Use protective gloves whenever possible.



Always wear proper eye protection when working with machinery and tools.



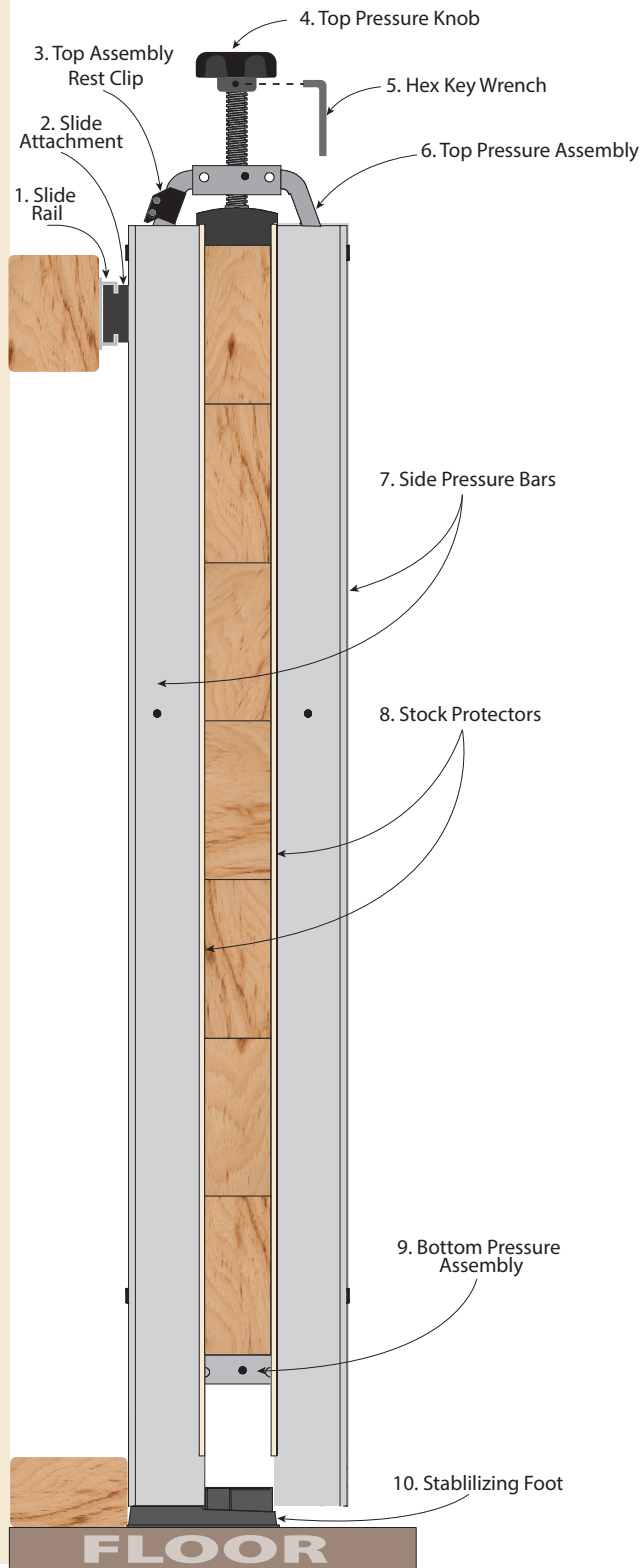
Always wear proper respiratory protection when working near airborne dust particles.

Please read and fully understand any and all safety materials that came with your power tools or machinery before operation. Always follow all safety guidelines set in place by the power tool or machine manufacturer.



1750 lbs.
OF 4 SIDED CLAMPING
PRESSURE!

PANEL MAX GLUE PRESS



PANEL MAX PARTS

Before assembling the Panel Max, lay-out and group all the parts so they can be easily identified. Use the table below and the drawing to the left to make sure you have all the parts accounted for before proceeding.

No	Description	QTY
1	Slide Rail	1
2	Slide Attachment	3
3	Top Assembly Rest Clip	3
4	Top Pressure Knob	3
5	Hex Key Wrench	1
6	Top Pressure Assembly	3
7	Side Pressure Bars	6
8	Stock Protectors	6
9	Bottom Pressure Assembly	3
10	Stabilizing Foot	3
11	Nylon Washer (<i>not shown</i>)	3
12	Short Screws (<i>not shown</i>)	3
13	Long Screws (<i>not shown</i>)	3

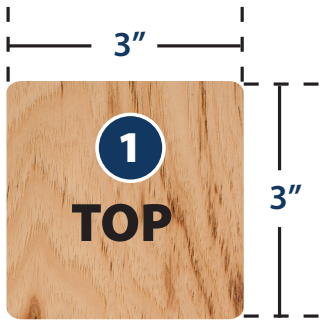
Included Spare Parts

Included spare parts in case of accidental loss or damage.

Description	QTY
Top Assembly Rest Clip	3
Springs for Pressure Assembly's	6

After you have checked the package contents, attach the **Top Pressure Knob (4)** to the **Top Pressure Assembly (6)** and secure the set screw using the included **Hex Key Wrench (5)**. Attach two **Stock Protectors (8)** to each **Side Pressure Bar (7)**

Wall Mounting Boards

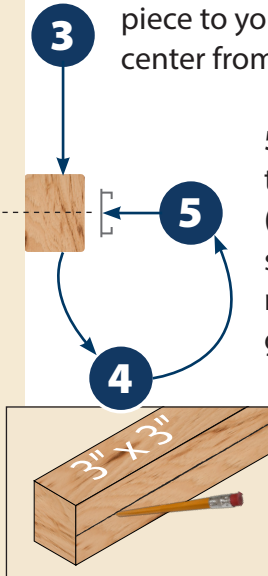


1. Cut a piece of lumber - that is 3" x 3" and at least as long as the Panel Max Slide Rail.



2. Cut a piece of lumber - that is 4" x 3" and at least as long as the Panel Max Slide Rail.

3. Mount the 3" x 3" piece to your wall 41" on center from the floor.

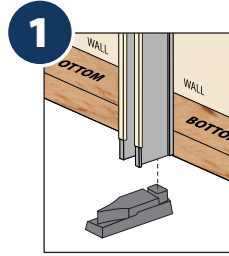


5. Attach the Slide Rail to 3" x 3" piece of stock (top piece) using 3 wood screws and use the line made in step #4 as a guide

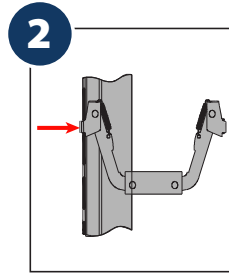
4. Draw a line the entire length of the 3" x 3" that is exactly 41" on center from the floor

6. Mount the 4" x 3" piece to the base or close to the base of your wall, making sure it is parallel to the floor.

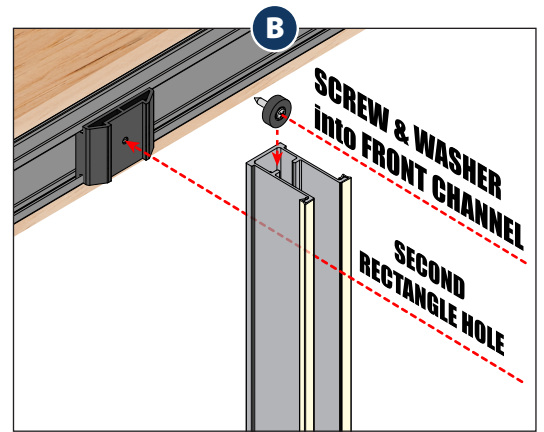
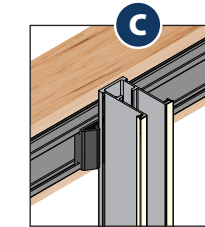
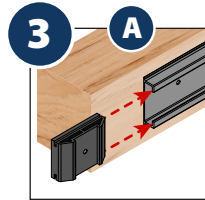
Panel Max Assembly



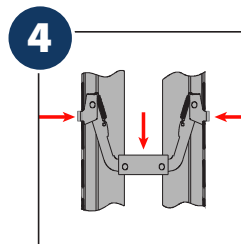
1. Attach the Stabilizing Foot in the bottom of the Side Pressure Bar that is going against the wall. The tapered end Must Be facing away from the wall as shown in **fig 1**.



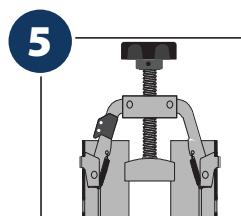
2. Insert the Bottom Pressure Assembly into the pressure bar that is going to be against the wall as shown in **fig 2**. The Bottom Pressure Assembly should be set at the 4th hole down for assembly process.



3. Insert the Slide Attachment (2) into the Slide Rail (1) (**fig. 3A**). Insert a Short Screw (12) through a Nylon Washer (11) (**fig. 3B**). Slide the screw & washer down through the front channel and insert the screw & washer into the second rectangular hole from the top (**fig. 3B**). Align the screw with the Slide Attachment (2) and insert the screw into the pre-drilled hole (**fig. 3B**). Secure with a philips head screw driver (**fig. 3C**).



4. Place the second Side Pressure Bar on to the Stabilizing Foot. Attach the lower pressure bar assembly to the second side pressure bar by sliding the spring loaded clip in from the top of the second pressure bar as shown in **fig 4**.



5. Install the Top Pressure Assembly into the two Side Pressure Bars from the top side as shown in **fig 5**. Repeat Panel Max Assembly steps for each vertical press clamp.

General Use for Panel Max



Quick Start

We recommend that you dry fit your panel before you apply glue. Before each panel glue up, you must make sure that the panel fits properly in the Panel Max Glue Press. Your boards can not protrude past the top of the Side Pressure Bars. Once your boards are in, secure the panel by latching the top pressure assembly and rotate the large knob. This draws in all four sides and clamps the panel tightly.

Non-Marring Jaw/Pad

Each Top Pressure Assembly has a non marring jaw that neatly seats inside the two Side Pressure Bars. This jaw applies even, downward pressure on your panel.



Top Assembly Rest Clip

The Top Assembly Rest Clip keeps the assembly from damaging the Side Pressure Bars when the Panel Max is being loaded or is not in use. It neatly hooks on to the back side of the Side Pressure Bar as shown to the left.



Spring Loaded Side Buttons

Both the top and bottom pressure assemblies are equipped with spring loaded buttons that allow you to quickly adjust the height. The Top Pressure Assembly always remains in the first square hole at the top, while the Bottom Pressure Assembly can be adjusted anywhere along the length of the Side Pressure Bars.



4 WAY CLAMPING PRESSURE

The Panel Max Glue Press System provides a space saving clamping solution that is second to none! Not only does it save space, it also clamps or puts even pressure on your panel from all four directions! This makes the Panel Max the go to clamp set up panels large and small!



EXPANDABILITY



You can attach as many Slide Rail's side by side to achieve any length needed. Extra Rails and Side Pressure Bars are available for purchase. 12" to 13" is the recommended distance between clamp rails.

PANEL MAX SPECS

- **Max stock Thickness**
0" to 5" thick
- **Max Panel Height**
6" to 39"
- **Approximate Clamping Pressure**
1750 lbs

Full Panel Max Glue Press System shown in image



MAINTENANCE



- When not in use, push the Side Pressure Bars together to avoid bumping them.
- Periodically lubricate the threads on the Top Pressure Assembly.
- Do your best to keep any glue from getting on the Panel Max parts. If glue does get on the Panel Max System, clean the glue off as soon as possible.